

FLOOR PLAN

LIMITED COMMON ELEMENT
"balcony"

LIMITED COMMON ELEMENT
"balcony"

LIMITED COMMON ELEMENT
"balcony"

LIMITED COMMON ELEMENT
"terrace"

STORAGE UNITS MAY BE SUBDIVIDED
OR CONVERTED INTO ADDITIONAL
UNITS OR COMMON ELEMENTS

LEGEND:
 G - GARAGE
 C.E. - COMMON ELEMENT
 L.C.E. - LIMITED COMMON ELEMENT
 S - STORAGE
 L - LIVING UNIT
 E - ENTRY
 F.T.C.H. - FLOOR TO CEILING HEIGHT

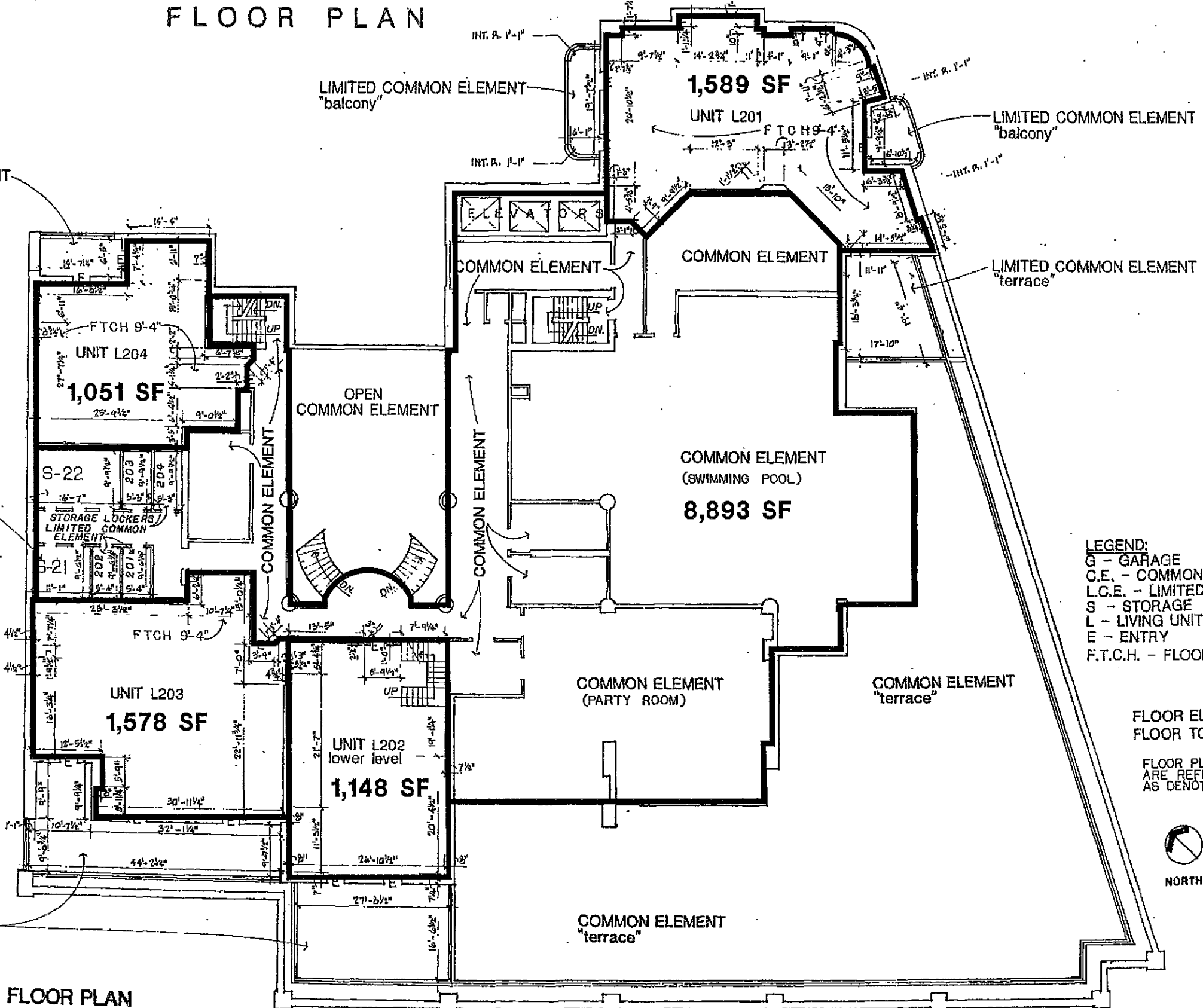
FLOOR ELEVATION 861.31
 FLOOR TO CEILING HEIGHT 8'-0"

FLOOR PLAN ELEVATIONS SHOWN
 ARE REFERENCE TO BENCHMARK
 AS DENOTED ON SITE PLAN.



2nd FLOOR PLAN

SHEET 6 OF 32 SHEETS



File No.



KKE Architects, Inc.
 300 first avenue north
 minneapolis, mn 55401
 (612) 339-4200
 FAX (612) 342-9267
 www.kke.com

minneapolis las vegas pasadena irvine

Project 0808.10495.01 Drawing Number
 Date 08/20/07 6
 Drawn by CAM 32
 Checked by QS