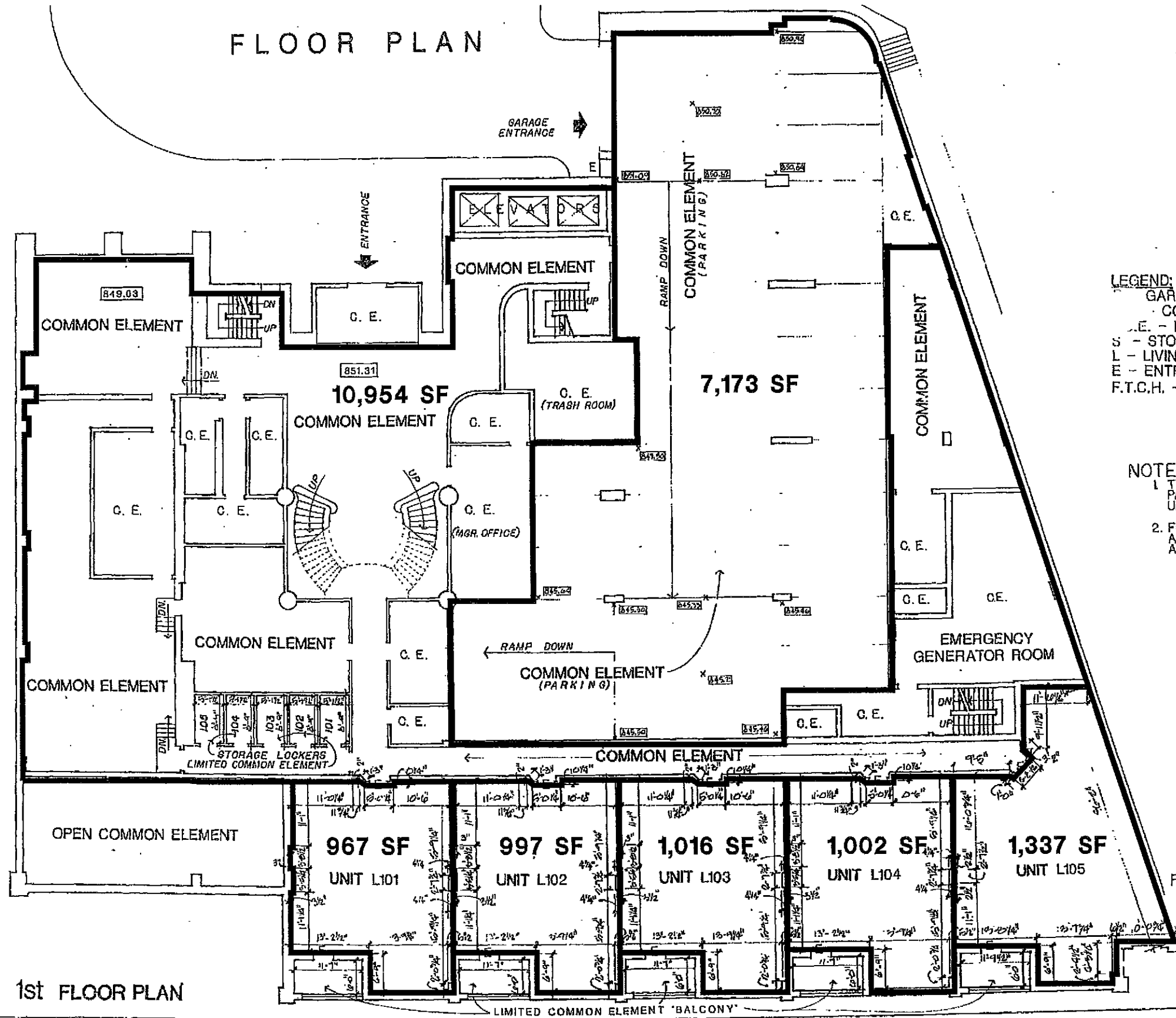


FLOOR PLAN



- LEGEND:**
- G - GARAGE
 - COMMON ELEMENT
 - G.E. - LIMITED COMMON ELEMENT
 - S - STORAGE
 - L - LIVING UNIT
 - E - ENTRY
 - F.T.C.H. - FLOOR TO CEILING

- NOTES:**
1. TYP GARAGE (G) UNIT IS 18'-0" PARKING DEPTH UNLESS OTHERWISE NOTED.
 2. FLOOR PLAN ELEVATIONS SHOWN ARE REFERENCE TO BENCHMARK AS DENOTED ON SITE PLAN.

FLOOR ELEVATION 851.31
FLOOR TO CEILING HEIGHT 8'-0"



SHEET 5 OF 32 SHEETS

File No.

1st FLOOR PLAN



KKE Architects, Inc.
300 first avenue north
minneapolis, mn 55401

(612) 339-4200
FAX (612) 342-9267
www.kke.com

minneapolis las vegas pasadena irvine

| | | | |
|------------|--------------|----------------|----|
| Project | 0808.1045.01 | Drawing Number | 5 |
| Date | 08/20/07 | | 32 |
| Drawn by | CAM | | |
| Checked by | GS | | |